

## 冷库板规格与技术参数

### Specification And Technical Parameters Of cold Storage Panels

|                                |   |  |
|--------------------------------|---|--|
| 芯材<br>Core Material            | 芯材 Core Material  | pur                                      |
|                                | 芯材密度 Density of Core Material   | 38kg/m <sup>3</sup> ~60kg/m <sup>3</sup> |
|                                | 耐温范围 Scope of Heat-Resistant  | -60℃ ~ +70℃                              |
| 面料<br>Surface Material         | 不锈钢板 Stainless Steel Sheet /彩钢板 color steel sheet/镀锌钢板 Galvanized Steel Sheet |  |
|                                | 厚度 Thickness  | 0.5~0.8mm(可定制 Customize)                 |
|                                | 涂层 Coating  | PE或其他 (可定制 Customize)                    |
| 其它面料<br>Other Surface Material | 根据客户要求定制 Customize  |  |
| 规格<br>Specification            | 长度 Length   | ≤12150mm                                 |
|                                | 宽度 Width  | 960mm                                    |
|                                | 厚度 Thickness  | 100,150,175,200mm                        |

## 冷库门配置 Refrigerator Door Configuration

|   |   |   |  |
|---|---|---|--|
| 门洞尺寸 Door opening dimension                     |   | 门板尺寸 Door panel dimension                       |  |
| 1200mmx2000mm<br>1500mmx2200mm<br>1800mmx2400mm |   | 1300mmx2000mm<br>1600mmx2200mm<br>1900mmx2400mm |  |
| 其他不同尺寸可定制                                       |   | different dimension can be custom               |  |
| 面板材料:   | 不锈钢或彩钢板<br>其他种类面板材料<br>可以定制   | panel material:                                 | stainless steel or<br>colored steel sheet<br>other kinds of steel<br>sheet can be<br>custom  |
| 产品统一配置:   | <ul style="list-style-type: none"> <li>① 铝合金专用滑道</li> <li>② 库内安全逃生装置</li> <li>③ 不锈钢锁环、门件、手柄、螺丝</li> <li>④ 专用门封条</li> <li>⑤ 硬质聚氨酯(PU)保温层, 高压注射发泡</li> <li>⑥ 专用断冷桥门框 (PVC/断桥铝)</li> <li>⑦ 推拉门专用侧滑道</li> </ul> | Product unified configuration:                  | <ul style="list-style-type: none"> <li>① Aluminum alloy Slide way</li> <li>② Emergency escape Device</li> <li>③ Stainless Steel Lock, Door accessories, Door Handles, Screws</li> <li>④ Professional Door seal strip</li> <li>⑤ Rigid polyurethane (PU) insulation layer, High pressure injection foaming</li> <li>⑥ Professional Cold-bridge disconnect Doorpost (PVC/ aluminum)</li> <li>⑦ Sideslip slideway Device of Sliding door</li> </ul> |

## H系列手动/电动平移门

## H Series Manual/Automatic Sliding Door



## L系列手动/电动平移门

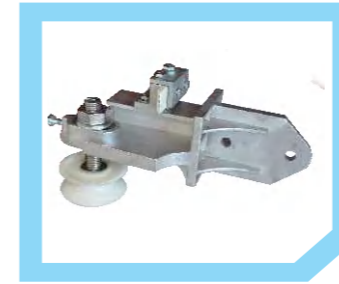
## L Series Manual/Automatic Sliding Door



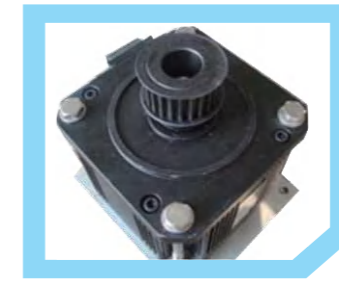
## HR系列手动/电动平移门 HR Series Manual/Automatic Sliding Door



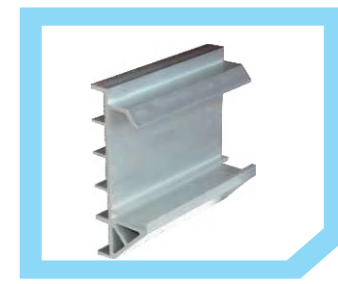
## 铰链式平开门 Hinged Door



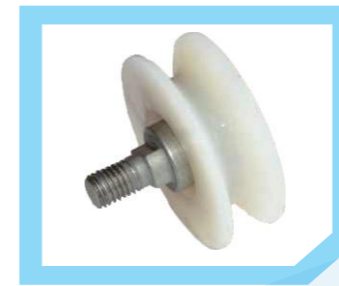
Hanging Bracket  
吊架



PM Motor  
同步永磁电机



The Main Slide Way  
主滑道



Door Wheel  
门轮



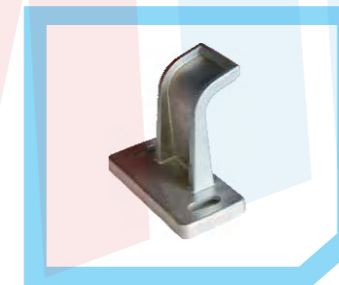
Power Cut Off  
Protection  
锁门断电保护装置



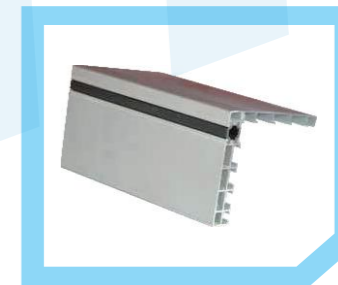
Stopper  
门锁挡铁



Outside  
Door Handle  
外开门把手



Holder Device  
压紧器



Broken Bridge  
Aluminum Doorpost  
断桥铝门口



Wheel Dragging  
Device  
拖轮器



Door Seal Strip  
(at bottom of the door)  
门封条



Emergency Escape Night  
Shining Handwheel  
库内逃生夜明手轮